

Flat 20, 48-50 Alexandra Road South, Whalley Range, Manchester, M16 8JA



JP&Brimelow
ESTATE AGENTS

Offers In The Region Of £190,000

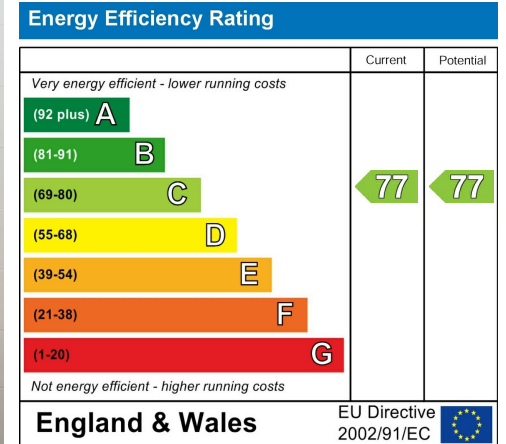
 2  2  1  C

VIDEO TOUR AVAILABLE A light and attractive, TWO DOUBLE BEDROOM top floor apartment, set within this attractive detached purpose-built development. Walking distance to nearby independent bars/restaurants including 'The Hilary Step' bar on Upper Chorlton Road, a Tesco Metro is close by on Withington Road and excellent bus links on your doorstep giving you the commuter direct access into the City Centre or Manchester International Airport. In brief this impressive apartment accommodation comprises; a communal entrance hallway with stairs leading to all floors, a private entrance hallway with built in storage, an open plan lounge/ fitted kitchen with patio doors leading to a Juliet balcony, two double bedrooms one benefiting from an en-suite shower room and a white three-piece bathroom. The apartment benefits from gas fired central heating, Juliet balcony, intercom system and one allocated parking space. The impressive Alexandra Park is positioned a short walk away offering open green space for running, cycling or walking.



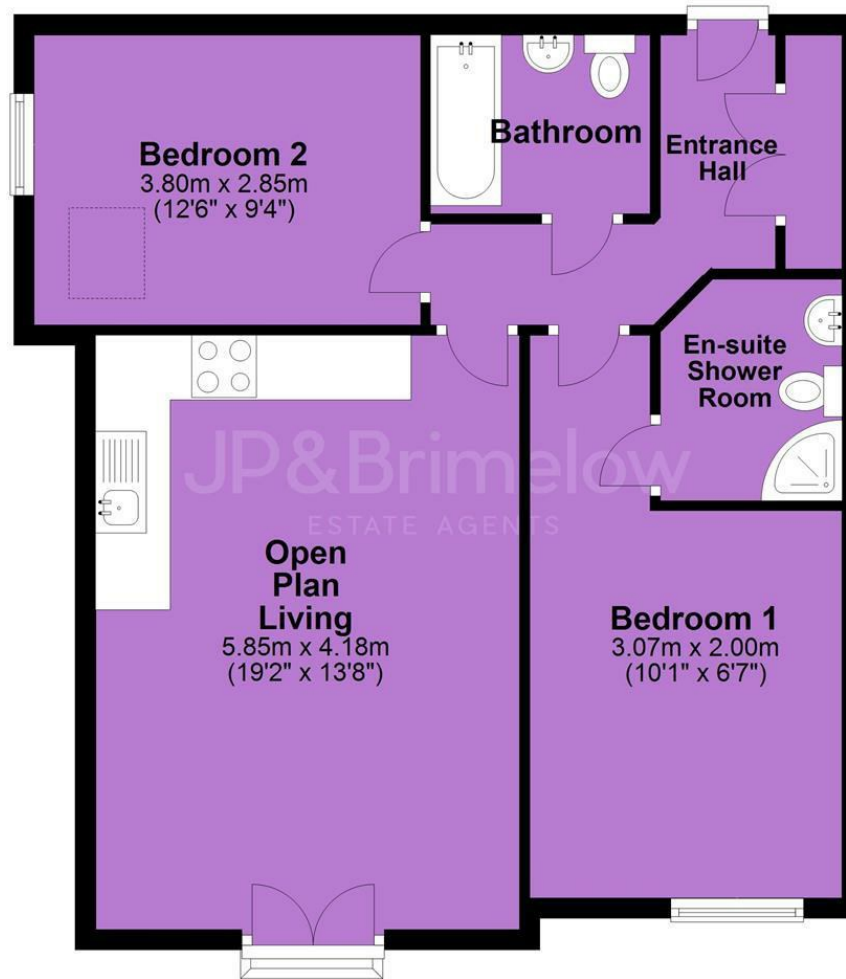


EPC Chart



Tenure: **Leasehold** Council Tax Band: **B**

Top Floor



JP & Brimelow Estate Agents Ltd
 430 Barlow Moor Road, Manchester, M21 8AD
 Tel: 0161 8822233
 E: sales@jpbrimelow.co.uk www.jpandbrimelow.co.uk



JP & Brimelow
 ESTATE AGENTS

NOTICE: JP & Brimelow Estate Agents Ltd for themselves and for the vendors or lessors of this property whose agents they are give notice that:

- (i) the particulars are set out as a general outline only for the guidance of intending purchasers or lessees, and do not constitute, nor constitute part of, an offer or contract;
- (ii) all descriptions, dimensions, references to the condition and necessary permissions for use and occupation, and other details are given in good faith and are believed to be correct but any intending purchasers or tenants should not rely on them as statements or representations of fact but must satisfy themselves by inspection or otherwise as to the correctness of each of them;
- (iii) no person in the employment of JP & Brimelow Estate Agents Ltd has any authority to make or give any representation or warranty whatever in relation to this property.

jpandbrimelowestateagents

@jpandbrimelow